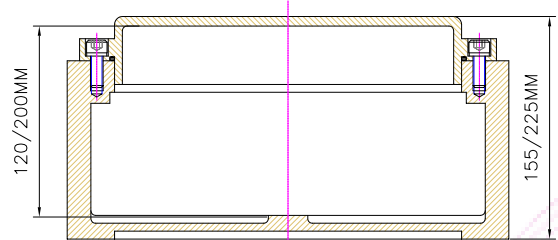


FRONT VIEW



BOTTOM VIEW

EXPLOSION PROOF JUNCTION BOX 270

TECHNICAL SPECIFICATION

Type of Ex-Protection	EEx-d Type, IS/IEC60079-1:2007
Zone Classification	Zone 1 & Zone 2
Gas Group	IIA, IIB, & IIC IS/IEC60079-0:2004
Ingress IP Protection	Ip66 IS/IEC60529-1:2001
Material of contraction	Dia Cast Aluminum Alloy Lm6
Paint	Epoxy Polyester Powder Coating
Earthing	Internal -01 No. External -02 Nos.
Cable Entry	As per Require
Hardware	Stainless Steel
Lamp Rating	2.5 sq.mm. 30 Nos. In Single Row & 60Nos. in Double Row