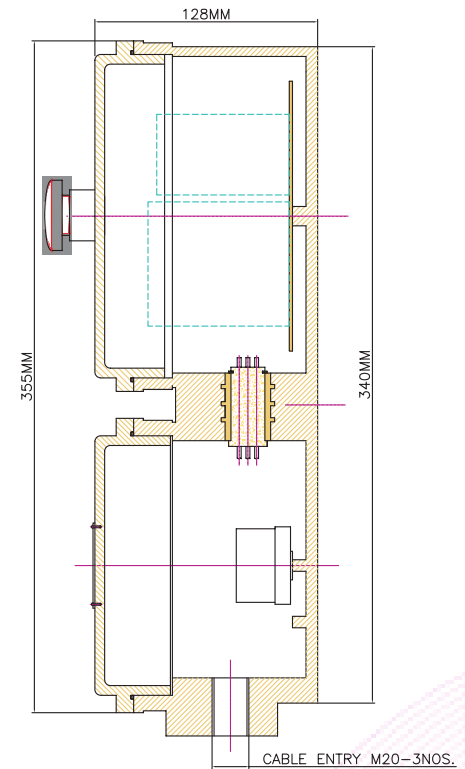


FORNT VIEW



SECATION VIEW

EXPLOSION PROOF DIRECT-ON-LINE STARTER

TECHNICAL SPECIFICATION

Type of Ex-Protection	Ex-d Type, IS/IEC60079-1:2007
Zone Classification	Zone 1 & Zone 2
Gas Group	IIA, IIB, IIC T6 IS/IEC60079-0:2004
Ingress IP Protection	IP66 IS/IEC60529-1:2001
Material of contraction	PDC Aluminum Alloy Lm6
Paint	Epoxy Polyester Powder Coating
Earthling	Internal -01 No. External -02 Nos.
Cable Entry	M20 - 03 Nos.
Hardware	Stainless Steel
Rating	UPTO 20 H.P. 220V/415Volts AC 50/60Hz.
Green Push Button	START with 1NO Contact elementf or 10 AMP
Red Push Button	STOP Mushroom Head Pad Lock with NC Contact 1

TRI-FLP ENGINEERS PVT. LTD.

11, 1st Floor, Popular Indl. Estate, Gokhale Compound,
Raghuvir Nagar, Near Char Rasta, Dombivli East,
Dist Thane 421201, Maharashtra, India.

Tel : +91 0251 2433393 / 2452001 / 2440071 / 2440081

Email : vikas@trimurtitriflp.com / triflp@gmail.com

Web : www.explosionproof.co.in

