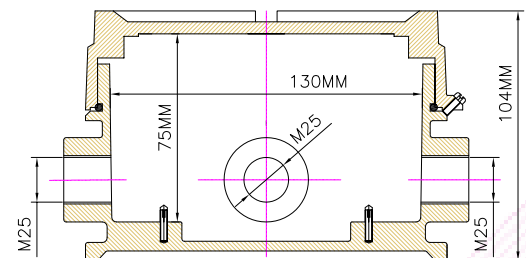


FRONT VIEW



BOTTOM VIEW

## EXPLOSION PROOF 4 WAY JUNCTION BOX

### TECHNICAL SPECIFICATION

Type of Ex-Protection	EEx-d Type, IS/IEC60079-1:2007
Zone Classification	Zone 1 & Zone 2
Gas Group	IIA, IIB, T6 IS/IEC60079-0:2004
Ingress IP Protection	IP66 IS/IEC60529-1:2001
Material of contraction	Pressure Dia Cast Aluminum Alloy Lm6
Paint	Epoxy Polyester Powder Coating
Earthling	Internal -01 No. External -02 Nos.
Cable Entry	04 Nos. for 1"ET ( M25) or 3/4"et (M20)
Hardware	Stainless Steel
Terminals	2.5sq.mm. 15 Nos. or 16 sq.mm. - 04 Nos.